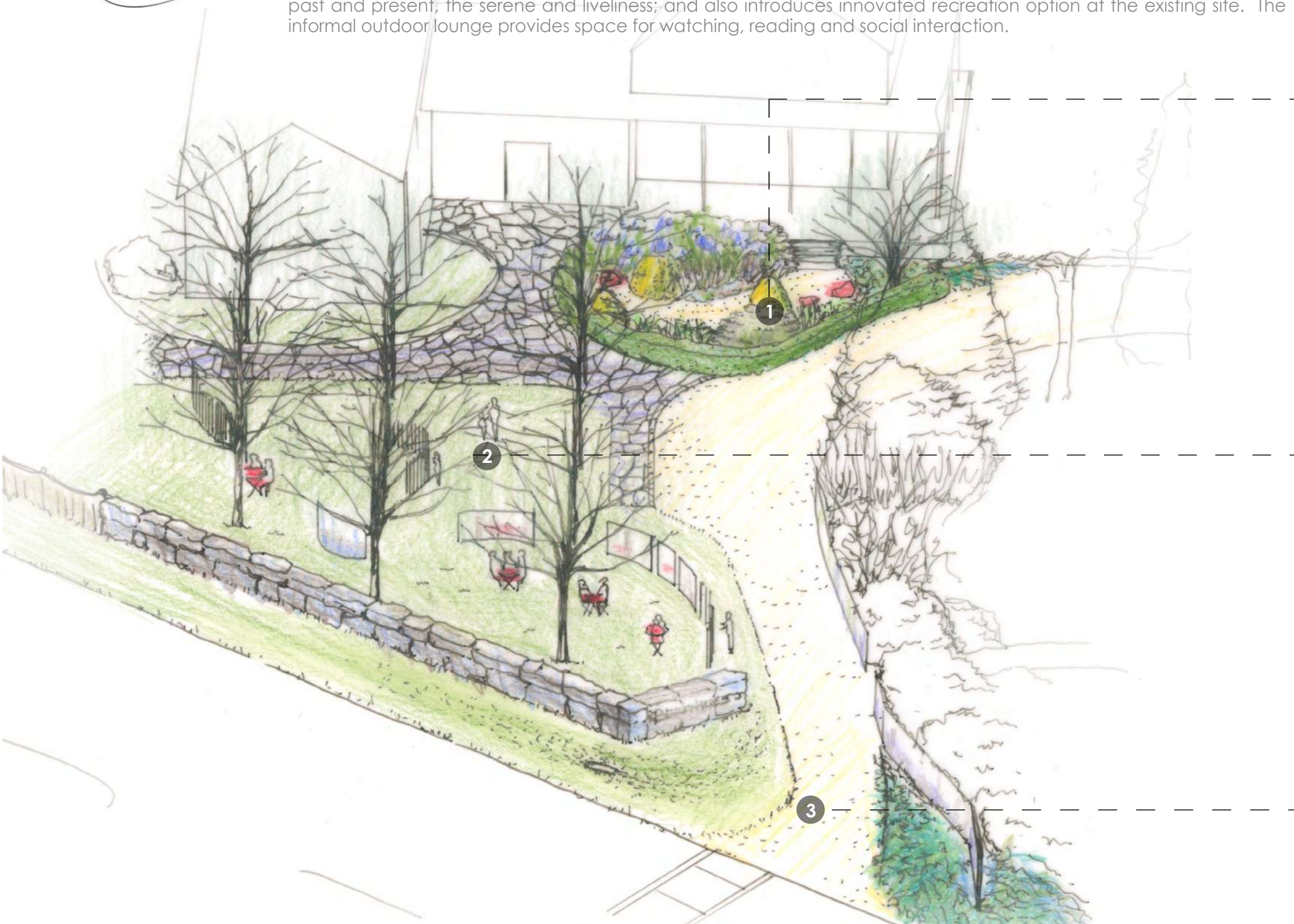
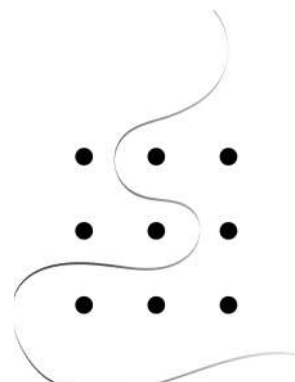


Concept

The design denoted the "contrast" between the proposed and the existing. The contrast of the stillness and movement; Old and New; formal and informal; visible and invisible.

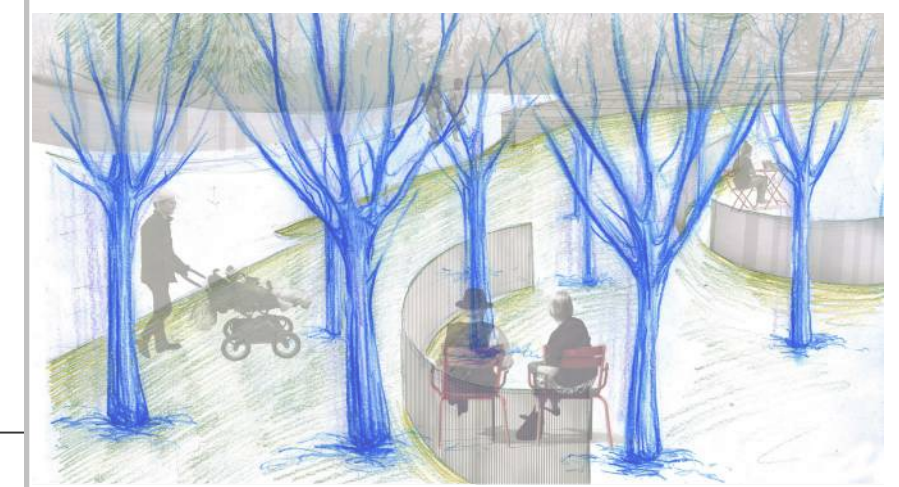
It is a destination yet a starting point. The wall of stone and polished stainless steel at the entrance act as a sign of destination by creating visual impact. The formal allée of maple trees creates room for gathering and outdoor parties; the informal meandering ribbon of stainless steel and aluminum bars encourage the interaction and exploration between the people and invisible elements of nature. Hear the sound when the wind blow through the aluminum bars, witness the fading of time slipping by when looking into the reflection on the façade of the "Ribbon". The ribbon reflects the past and present, the serene and liveliness; and also introduces innovated recreation option at the existing site. The informal outdoor lounge provides space for watching, reading and social interaction.



1 Outdoor Lounge



2 Interactive Gathering Space

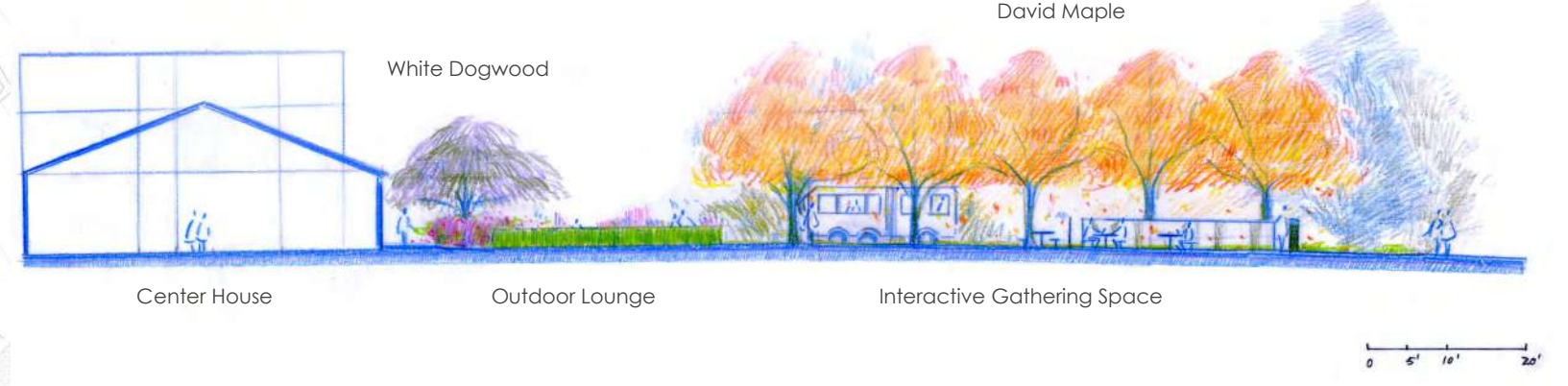


3 Entry Space





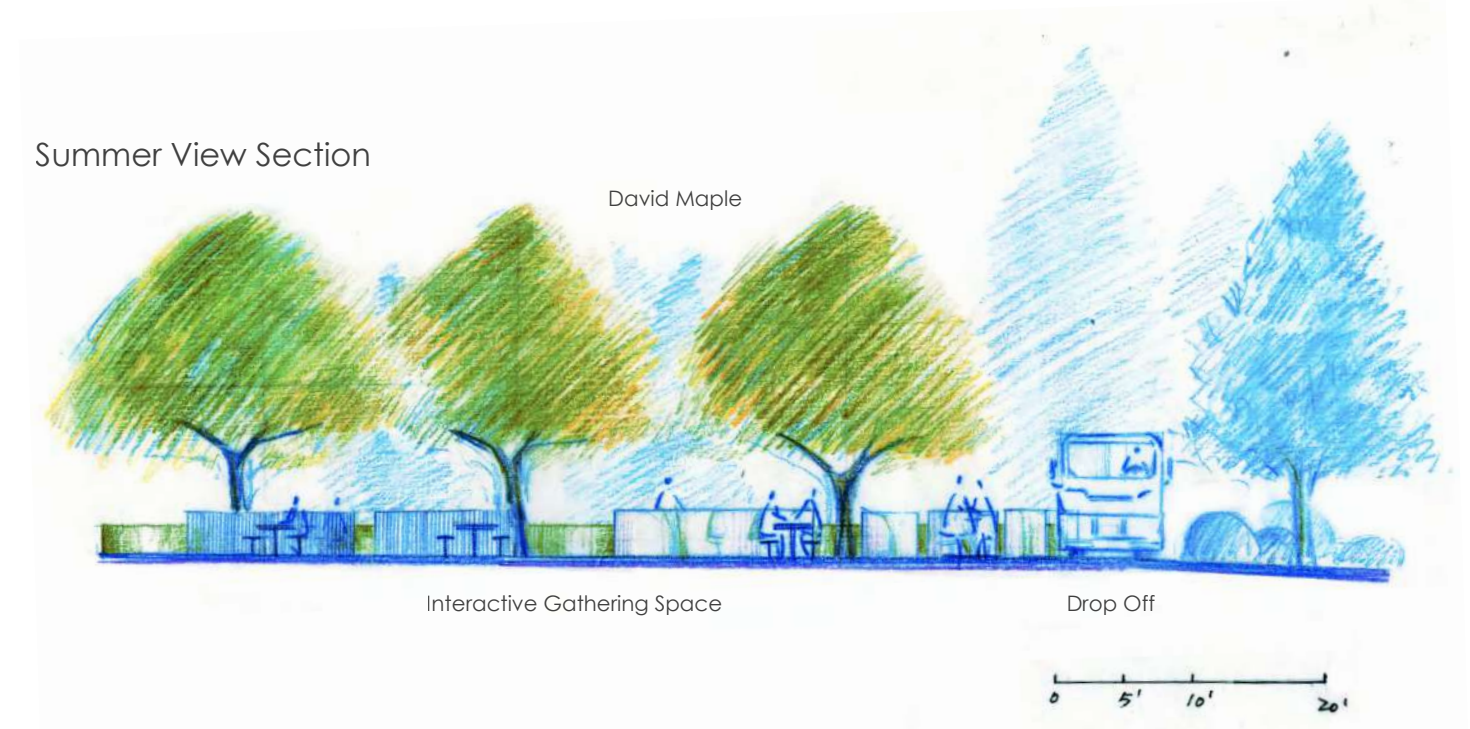
Fall View Section






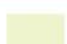
Plant Materials

H Hydrangea	CA Consolida ajacis	LC Lychnis Coronaria	LG Little Giant Arborvitae	David Maple
BD Buddleia Davidii	MR Mock Rush	B Boxwood	BW Bishop's Weed	BPJ Blue Pacific Juniper
CP Creeping Phlox	KB Kentucky Blue Grass	BCJ Blue Chip Juniper	BO Blue Oat Grass	White Dogwood

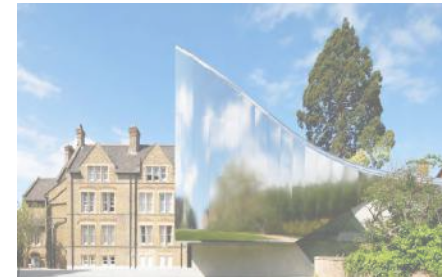
Summer View Section





- 
-  Vehicular Circulation
-  Major Pedestrian Circulation
-  Secondary Pedestrian Circulation
-  Aluminum Bar
-  Stainless Steel
-  Stone Wall (Match with Building's)
-  New Entry of Destination
-  Interactive Gathering Space
-  ADA Drop-off + Delivery Space
-  Outdoor Lounge

Construction Materials



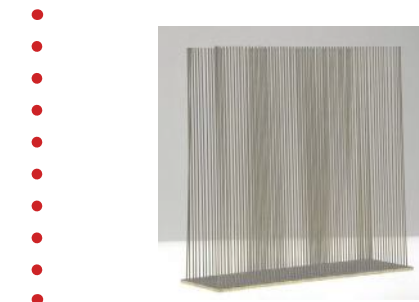
Stainless Steel

Case Study Reference: Oxford University Stainless Steel Building



Seperate Stainless Steel

Case Study Reference: Casa Invisible Reflection Walls



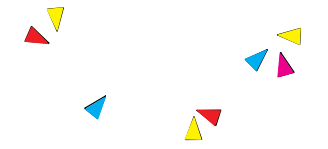
Aluminum Bars

Case Study Reference: kentuck knob sculpture garden wind chime

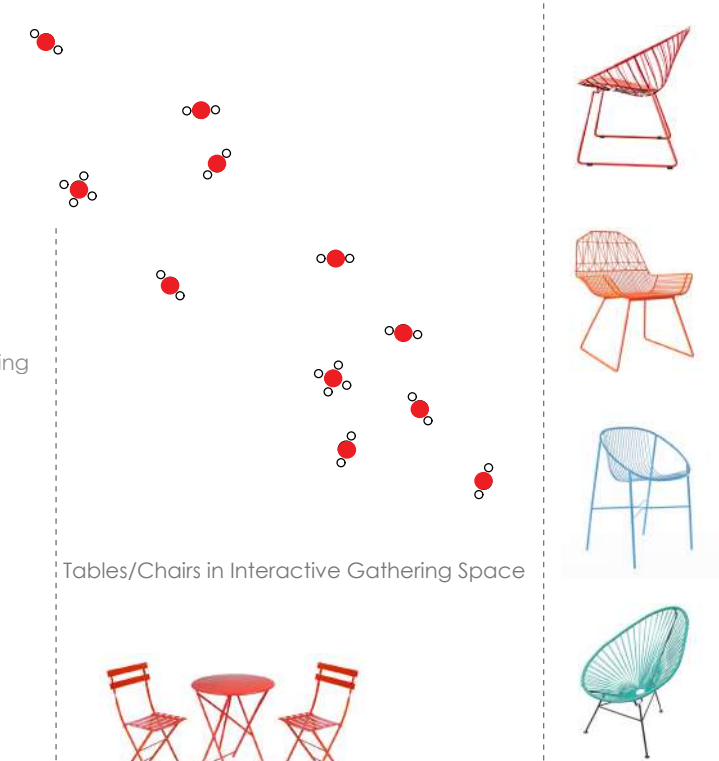


Dry Laid Stone

Movable Installation Method



Chairs in Outdoor Lounge



Stone Wall Construction Detail

